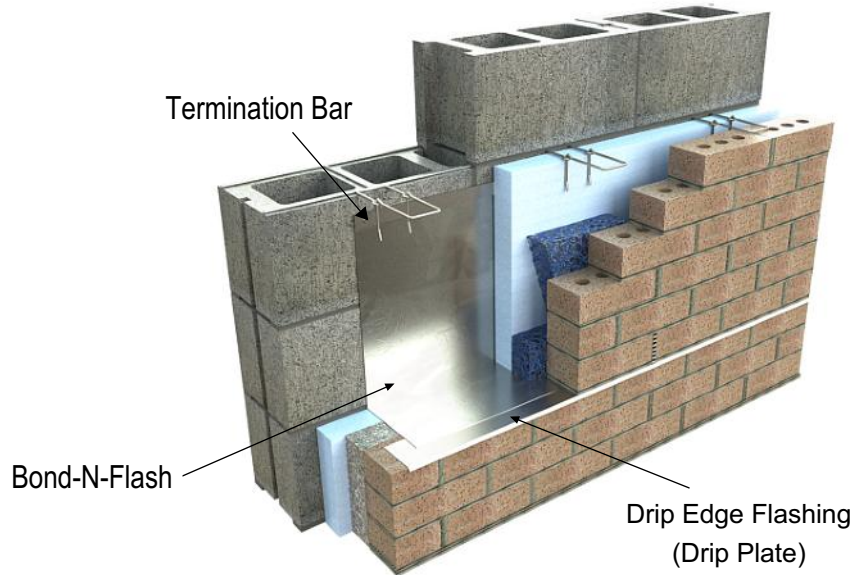
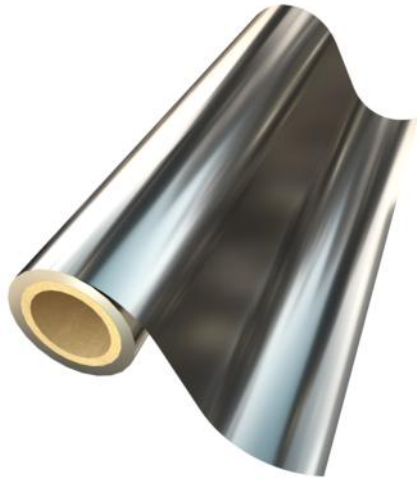


# PRODUCT SUBMITTAL



## 4160 BOND-N-FLASH 304 Stainless Steel Flashing



**Note: A Termination Bar is required for surface-mounted applications.**

**Description:**

BOND-N-FLASH stainless steel composite flashing consists of 2 mils of stainless steel (type 304) bonded on one side to a permanent woven film fabric. BOND-N-FLASH Mastic is used to seal all seams and laps.

**Technical Data:**

Property	Avg. Values	Test Method
Puncture	2,500 psi	ASTM E154
Tensile Strength	100,000 psi	ASTM D882
Fire Resistance	Class A, Pass	ASTM E84
Mold Resistance	Pass	ASTM 3273
Stainless Steel certified to meet:		ASTM A240/A240M

**Features and Benefits:**

- 304 Stainless Steel
- Permanent UV Resistance
- Fire Resistant
- Mold Resistance
- High Puncture and Tear Resistance
- Flexible for easy job site formation
- Life of the wall warranty
- Bond-N-Flash should be placed 2" onto the drip edge but not more than 2-1/4".
- Laps at splices should be a minimum of 4".

**Applications:**

- Thru-Wall Flashing
- Head and Sill Flashing
- Spandrel Flashing
- Roof-Parapet Flashing
- Perimeter Flashing-Curtain Wall
- Base Flashing
- Transition Membrane (Waterproofing, Roofing, Air Barriers)



**Total recycled content 65%**

**Post Industrial recycled content 65%**

**Post Consumer recycled content 0%**

**LEED – EA credit 1 and EQ credit 4.1**

BOND-N-FLASH is compatible with air barriers, insulation boards, spray polyurethane foam, roofing membranes, asphaltic flashings, and below grade waterproofing products. Can be used with limestone since it is non-staining.

**Weight:** 2 mils of stainless steel (type 304) bonded on one side to a permanent woven film fabric

Width:  12"  18"  24" (75 lf rolls)

**Accessories:**

- #4198 Quick Set Sealant - 28 oz. cartridge
- #4161W Bond -N- Flash Primer (Water Based) - 5 gallon pail
- #4161S Bond -N- Flash Primer Solvent Based (Winter Grade) - 5 gallon pail

**Termination Bar (Required):**

- #4200 Stainless Steel  #4200 PVC
- #4210 Stainless Steel with Flange Top for Sealant

**Stainless Steel Corners & End Dams:**

- #4194 End Dam Stainless Steel Flashing
- #4196 Inside Corner Stainless Steel Flashing
- #4196 Outside Corner Stainless Steel Flashing

**Drip Edge Plate Flashing:**  3" width  1-1/2" width

- #4165 Drip Edge Flashing Stainless Steel (8'-0")
- #4166 Inside Drip Edge Corner Stainless steel Flashing
- #4166 Outside Drip Edge Corner Stainless Steel Flashing

**Weeps & Vents:**  #3601 Cell Vent  #3603 Clear Rectangular Vent  
 #3602 Louvered Weephole

**Mortar Suspension:**  #3611D Cavity Net DT 1"  #3611D Cavity Net DT 2"

**Corporate Office:** 400 Rountree Rd Charlotte, NC 28217  
TEL: (800) 849-6722 FAX: (704) 525-3761

**Mailing Address:** P.O. Box 240988 Charlotte, NC 28224



[www.wirebond.com](http://www.wirebond.com)

**Memphis Plant:** 2365 Harbor Ave. Memphis, TN 38113  
TEL: (800) 441-8359 FAX: (901) 775-9449

**Mailing Address:** P.O. Box 13124 Memphis, TN 38113